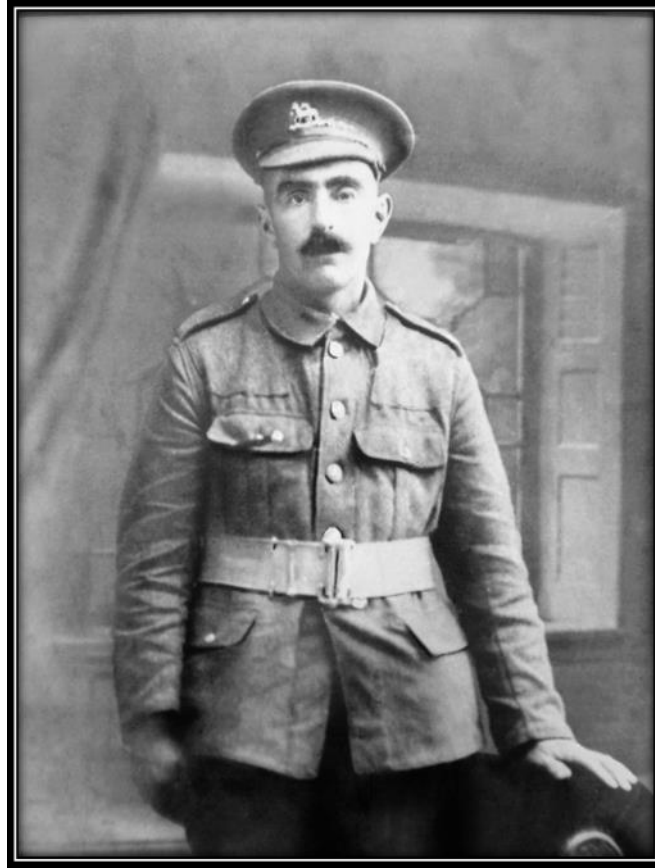


WILLIAM HENRY FRY

Private 55472, 16th Battalion Royal Welsh Fusiliers

Died on 18th September 1918, Gouzeaucourt, near Cambrai, age 32



George Fry moved to Stanford Farm, then called Leonards Farm, from Sheephatch, near Farnham after he had married Charlotte Faggetter at Pirbright in 1874. The couple had 5 children, 3 girls and 2 boys, Alfred the older and William Henry, who was born in 1886.



Stanford Farm in 1923

Both boys went to Pirbright School and appear to have been mostly well-behaved, but Alf did appear once in the log book for repeatedly throwing stones and William for 'disorder'.

In 1901 both brothers' occupation were Carmen, collecting and delivering goods locally, but this would have had to change when their father George died in 1906 and they had to take over the running of the 30 acre farm. That is how they appear in the 1911 census, with Alf the farmer and William a farm labourer, with Joseph Parlett, a cousin, to help. All their sisters had married and moved away by then. Flora, the eldest, ran the Royal Oak with her husband Albert Hawksford for a time.

As he was helping his brother, William was able to claim exemption from call-up for a while, but this was removed in October 1916 and he was sent to the Queens Regiment. At some later stage he was transferred to the 16th Battalion of the Royal Welsh Fusiliers. He died with them in an attack on Gouzeaucourt, near Cambrai on September 18th 1918, less than 2 months before the end of the war.

As he was a farmer, William's brother Alfred was never called up. He married Carrie, the widow of George Tucker, who was killed early in the war – see his biography.